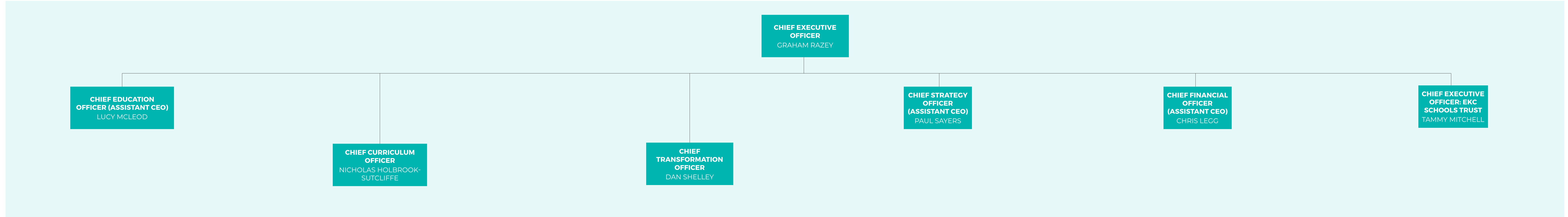


EKC GROUP LEADERSHIP STRUCTURE



EKC GROUP SERVICES

MARKETING AND EXTERNAL AFFAIRS	EDUCATION IMPROVEMENT	FURTHER EDUCATION AND HIGHER EDUCATION EXPERIENCE	CORPORATE SERVICES	DIGITAL TRANSFORMATION AND CUSTOMER SERVICE	MANAGEMENT INFORMATION FUNDING	PROJECTS	RESOURCING	STAKEHOLDER ENGAGEMENT	ESTATES	FINANCE	TECHNOLOGY	PEOPLE DEVELOPMENT	GOVERNANCE	HUMAN RESOURCES	BUSINESS SUPPORT
Director Jamie Weir	Director Neala Whybrow	Director Lauren Anning	Director Alison Gray	Director Nathan Hunt	Director Jim Evans	Director Stewart Haywood	Director Natalee Hill	Director Jonathan Smith Hayley Barden	Director Stephen Whybrow (interim)	Director Jonathan Cresswell	Director Barry Boden	Director Summer Macer	Director Sharon Hollingsworth	Director Paul Simpson	Director Vacancy

COLLEGES

ASHFORD COLLEGE	BROADSTAIRS COLLEGE	CANTERBURY COLLEGE	DOVER TECHNICAL COLLEGE	FOLKESTONE COLLEGE	SHEPPEY COLLEGE
Principal Susan Bonett	Principal Emily Johnson (interim)	Principal Victoria Copp-Crawley	Principal Paul Owen	Principal Donna Smith	Principal Alan Salter

TRAINING UNITS

EKC WORKHIGHER	EKC INTOWORK
Managing Director Kurt Salter	Managing Director Lindsey Biggs

EKC COMMERCIAL SERVICES

EKC COMMERCIAL SERVICES
Director Tracy Flower

Document History			
Version	Date	Editor	Comments
1.0	06/09/21	JW	Changes to posts/titles
1.1	20/09/21	JW	Addition of Chief Transformation Officer
1.2	21/10/21	JW	Small changes and new post
1.3	3/11/21	JW	Small alterations to layout
1.4	25/11/21	JW	Major structural changes
1.5	12/01/22	JW	Small changes to positions
1.6	22/02/22	JW	Postholder name change
1.7	26/04/22	JW	New layout
1.8	05/05/22	JW	Design changes